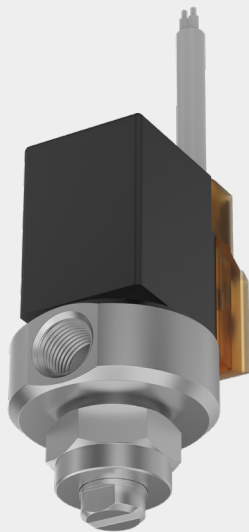


*ENGINEERING
YOUR SPRAY SOLUTION*



NEW

Solenoid valve Series 166H



- Compact solenoid valve
- Flexible in use
- Large variety of nozzles for various applications



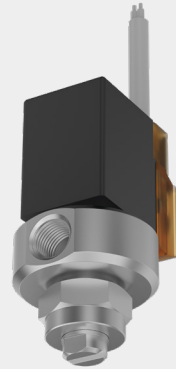
The stainless steel housing in combination with a solenoid valve allows a flexible timing of the spray application.

Applications:

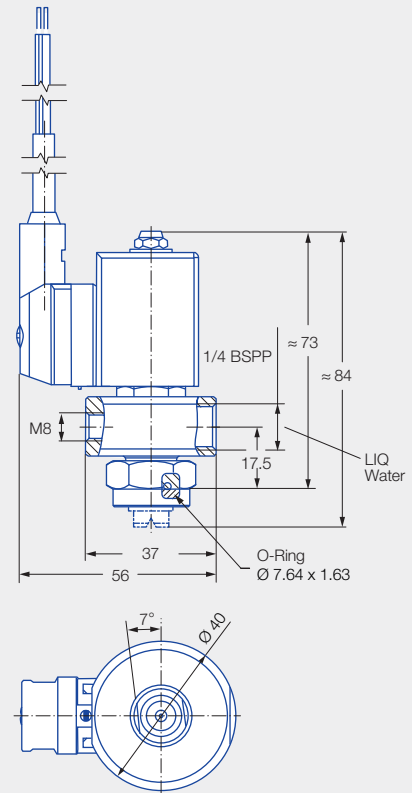
- Coating and cleaning
- Surface treatment
- Humidification
- Lubrication processes

Scope of delivery:

- Solenoid valve with body, power cable (5 m plugged cable) and retaining nut
- Nozzle must be ordered separately



Series 166H



Material:

Body: stainless steel 1.4404

Inner parts: stainless steel 1.4404, 1.4301, 1.4113

Sealing material: FKM (FDA compliant)

Water flow rate:

Max. 6.5 l/min at 5 bar

Max. operating pressure:

10 bar

Power:

8 W

Voltage:

24 V DC






Protection class:

IP 65

Max. switching frequency:

500/min at 5 bar

Ordering no.
166.000.1Y.H1.00.0

	Type	Suitable nozzle size up to	Spray pattern	Spray angle	Material
	226	285	Hollow cone	60°/90°	1.4305
	468	68X	Full cone	60°/90°/120°	1.4571/1.4404 2.0401 PVDF
	684	608	Flat fan (tongue type nozzle)	140°	POM PVDF
	652	64X	Flat fan	20°/30°/45° 60°/75°/90° 120°	1.4305 1.4571/1.4404 2.0401
	Detailed information on the dovetail version can be found on the next page.				

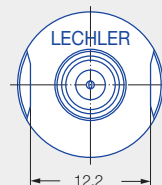
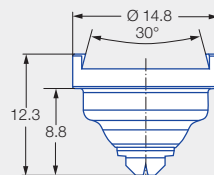
Your benefits

- Quick and simple nozzle change by using a retaining nut
- Simple spray adjustment
- Flexible design, therefore flat fan nozzles, hollow cone nozzles and full cone nozzles can be used
- With integrated O-ring for sealing between nozzle and valve




Features:

- Nozzle body design fluidically optimized for pulsed operation
- Positioning takes place via attached dovetail
- Flow rate and spray angle identical to standard nozzle series 652



Series 652.XXX.16.56

	Type	Suitable nozzle size up to	Spray pattern	Spray angle	Material
	652.XXX.16.56	64X	Flat fan	20°/30°/45° 60°/75°/90° 120°	1.4305

Please refer to the data of the 652 series on pages 4.16 + 4.17 for the nozzle size (flow rate and spray angle) in our main catalogue.