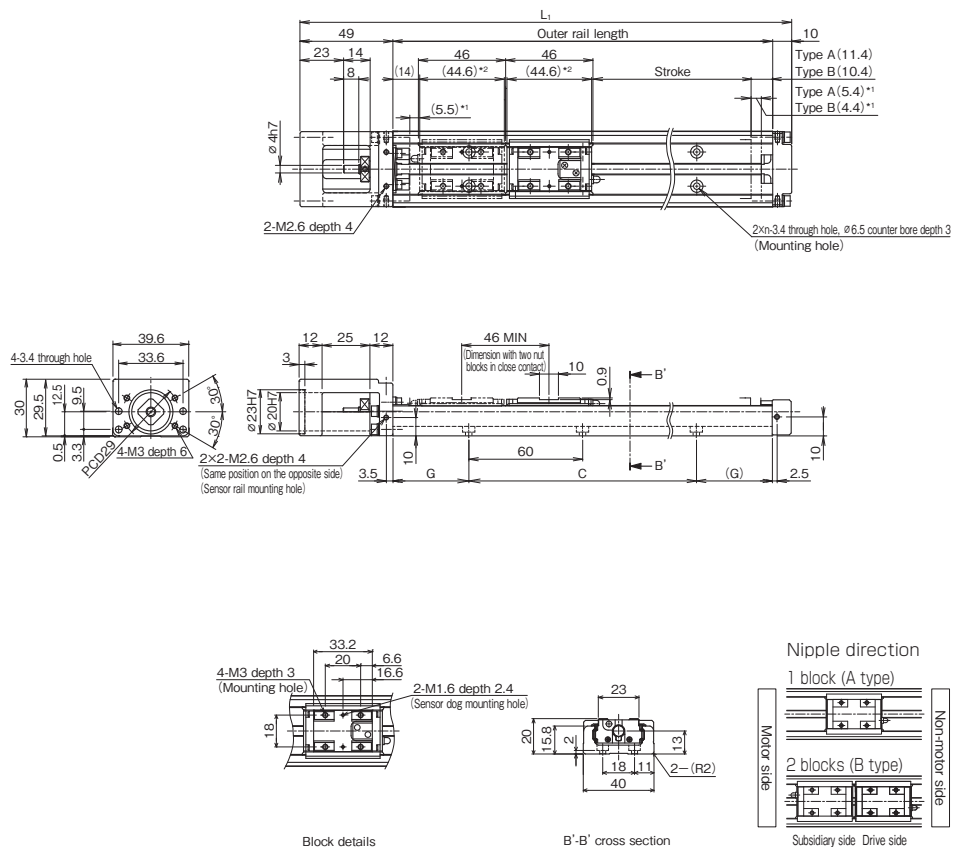


# SKR20 Without Cover, Direct Motor Coupling

Model SKR20□□A (with a Single Long Nut Block)

Model SKR20□□B (with Two Long Nut Blocks)

For model number coding, see **A2-28**.



\*1 Distance between the mechanical stopper and the stroke starting position.

\*2 This indicates the block length when calculating the possible stroke range.

It is 90.6 mm (total) for an SKR20 with 2 blocks in close contact with each other (B type).

Stroke (mm) (stroke between mechanical stoppers)		Outer rail length (mm)	Overall length $L_1$ (mm)	C (mm)	G (mm)	n	Overall main unit mass (kg)	
Type A	Type B*						Type A	Type B
30 (40.9)	—	100	159	60	20	2	0.47	—
80 (90.9)	35 (44.9)	150	209	120	15	3	0.6	0.67
130 (140.9)	85 (94.9)	200	259	120	40	3	0.74	0.81

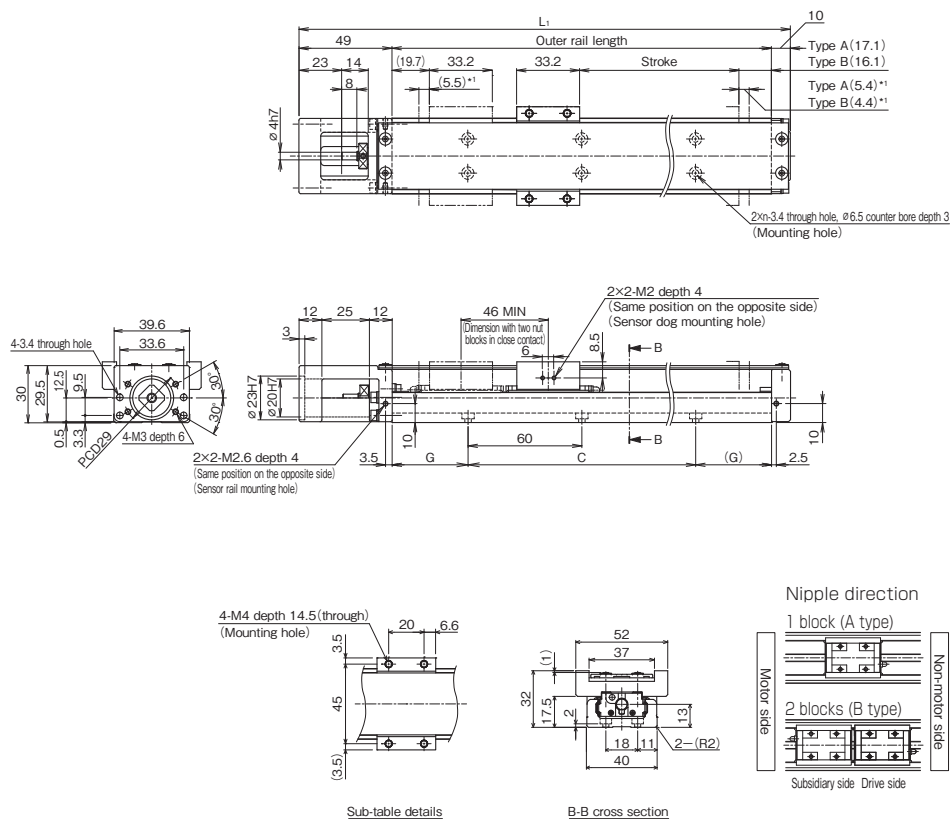
\*Indicates a value when two inner blocks are in close contact with each other.

# SKR20 With Cover, Direct Motor Coupling

Model SKR20□□A (with a Single Long Nut Block)

Model SKR20□□B (with Two Long Nut Blocks)

For model number coding, see **A2-28**.



\*1 Distance between the mechanical stopper and the stroke starting position.

Stroke (mm) (stroke between mechanical stoppers)		Outer rail length (mm)	Overall length $L_1$ (mm)	C (mm)	G (mm)	n	Overall main unit mass (kg)	
Type A	Type B*						Type A	Type B
30 (40.9)	—	100	159	60	20	2	0.55	—
80 (90.9)	35 (44.9)	150	209	120	15	3	0.69	0.81
130 (140.9)	85 (94.9)	200	259	120	40	3	0.84	0.96

\*Indicates a value when two inner blocks are in close contact with each other.