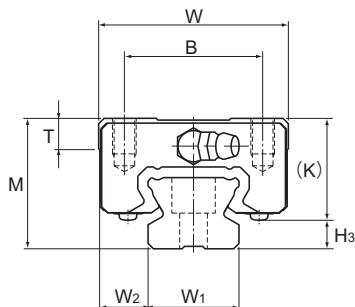


## Models SR-W, SR-WM, SR-V and SR-VM



Model No.	Outer dimensions			LM block dimensions										Grease nipple	H <sub>3</sub>
	Height	Width	Length	B	C	S × ℓ	L <sub>1</sub>	T	K	N	E				
	M	W	L												
SR 15V/VM SR 15W/WM	24	34	40.4 57	26	— 26	M4 × 7	22.9 39.5	5.7	18.2	6	5.5	PB1021B	5.8		
SR 20V/VM SR 20W/WM	28	42	47.3 66.2	32	— 32	M5 × 8	27.8 46.7	7.2	22	6	12	B-M6F	6		
SR 25V/VM SR 25W/WM	33	48	59.2 83	35	— 35	M6 × 9	35.2 59	7.7	26	7	12	B-M6F	7		
SR 30V/VM SR 30W/WM	42	60	67.9 96.8	40	— 40	M8 × 12	40.4 69.3	8.5	32.5	8	12	B-M6F	9.5		
SR 35V/VM SR 35W/WM	48	70	77.6 111	50	— 50	M8 × 12	45.7 79	12.5	36.5	8.5	12	B-M6F	11.5		
SR 45W	60	86	126	60	60	M10 × 15	90.5	15	47.5	11.5	16	B-PT1/8	12.5		
SR 55W	68	100	156	75	75	M12 × 20	117	16.7	54.5	12	16	B-PT1/8	13.5		
SR 70T	85	126	194.6	90	90	M16 × 25	147.6	24.5	70	12	16	B-PT1/8	15		
SR 85T	110	156	180	100	80	M18 × 30	130	25.5	91.5	27	12	A-PT1/8	18.5		
SR 100T	120	178	200	120	100	M20 × 35	150	29.5	101	32	12	A-PT1/8	19		
SR 120T	110	205	235	160	120	M20 × 35	180	24	95	14	13.5	B-PT1/4	15		
SR 150T	135	250	280	200	160	M20 × 35	215	24	113	17	13.5	B-PT1/4	22		

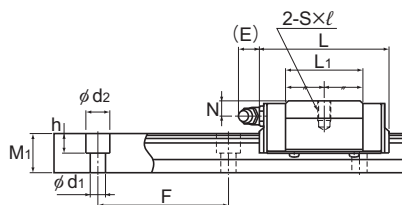
### Model number coding

**SR25 W 2 UU C0 M +1240L Y P T M - II**

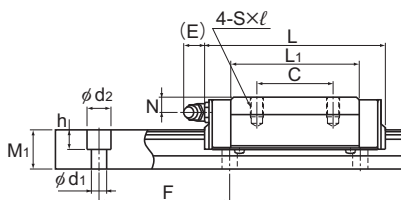
Model number	Type of LM block	Contamination protection accessory symbol (*1)	Stainless steel LM block	LM rail length (in mm)	Stainless steel LM rail	Symbol for No. of rails used on the same plane (*4)						
SR	25	W	2	UU	C0	M	+1240L	Y	P	T	M	- II
	No. of LM blocks used on the same rail	Radial clearance symbol (*2) Normal (No symbol) Light preload (C1) Medium preload (C0)	Applied to only 15 and 25	Accuracy symbol (*3) Normal grade (No Symbol)/High accuracy grade (H) Precision grade (P)/Super precision grade (SP) Ultra precision grade (UP)	Symbol for LM rail jointed use							

(\*1) See contamination protection accessory on **A1-510**. (\*2) See **A1-71**. (\*3) See **A1-77**. (\*4) See **A1-13**.

Note) This model number indicates that a single-rail unit constitutes one set. (i.e., required number of sets when 2 rails are used in parallel is 2 at a minimum.)



Model SR-V



Model SR-W

Unit: mm

LM rail dimensions						Basic load rating			Static permissible moment kN·m*					Mass	
Width $W_1$ $\pm 0.05$	Height $M_1$	Pitch $F$	Pitch $F$	Length* Max	Length* Max	C kN	$C_0$ kN	$M_A$		$M_B$		$M_C$	LM block kg	LM rail kg/m	
								1 block	Double blocks	1 block	Double blocks	1 block			
15	9.5	12.5	60	3.5×6×4.5	(1240) 2500	5.39 9.51	11.1 19.3	0.0326 0.0925	0.224 0.516	0.0203 0.0567	0.143 0.321	0.0654 0.113	0.12 0.2	1.2	
20	11	15.5	60	6×9.5×8.5	(1480) 3000	7.16 12.5	14.4 25.2	0.053 0.146	0.332 0.778	0.0329 0.0896	0.21 0.481	0.11 0.194	0.2 0.3	2.1	
23	12.5	18	60	7×11×9	(2020) 3000	11.7 20.3	22.5 39.5	0.103 0.286	0.649 1.52	0.0642 0.175	0.41 0.942	0.201 0.355	0.3 0.4	2.7	
28	16	23	80	7×11×9	(2520) 3000	17.2 30	32.5 56.8	0.163 0.494	1.08 2.55	0.102 0.303	0.692 1.57	0.352 0.611	0.5 0.8	4.3	
34	18	27.5	80	9×14×12	(2520) 3000	23.8 41.7	44.1 77.2	0.259 0.74	1.68 4.01	0.161 0.454	1.07 2.49	0.576 1.01	0.8 1.2	6.4	
45	20.5	35.5	105	11×17.5×14	3000	55.3	101	1.1	5.96	0.679	3.69	1.77	2.2	11.3	
48	26	38	120	14×20×17	3000	89.1	157	2.27	11.3	1.39	6.98	2.87	3.6	12.8	
70	28	47	150	18×26×22	3000	156	266	2.54	13.2	2.18	11.3	4.14	7	22.8	
85	35.5	65.5	180	18×26×22	3000	120	224	2.54	15.1	1.25	7.47	5.74	10.1	34.9	
100	39	70.3	210	22×32×25	3000	148	283	3.95	20.9	1.95	10.3	8.55	14.1	46.4	
114	45.5	65	230	26×39×30	3000	279	377	5.83	32.9	2.87	16.2	13.7	—	—	
144	53	77	250	33×48×36	3000	411	537	9.98	55.8	4.92	27.5	24.3	—	—	

Note1) Symbol M indicates that stainless steel is used in the LM block, LM rail and balls. Those models marked with this symbol are therefore highly resistant to corrosion and environment.

Those model numbers including and greater than SR85T are semi-standard models. If desiring these models, contact THK. Models SR85T and SR100T are equipped with grease nipple on the side face of the LM block.

The maximum length under "Length\*" indicates the standard maximum length of an LM rail. (See [A1-218](#).)

Static permissible moment\*: 1 block: static permissible moment value with 1 LM block

Double blocks: static permissible moment value with 2 blocks closely contacting with each other

Note2) For models SR15 and 25, two types of rails with different mounting hole dimensions are offered (see Table1).

When replacing this model with model SSR, pay attention to the mounting hole dimension of the LM rail.

Contact THK for details.

Table1 The dimension of the rail mounting hole

Model No.	Standard rail	Semi-Standard rail
SR 15	For M3 (No symbol)	For M4 (Symbol Y)
SR 25	For M6 (Symbol Y)	For M5 (No symbol)