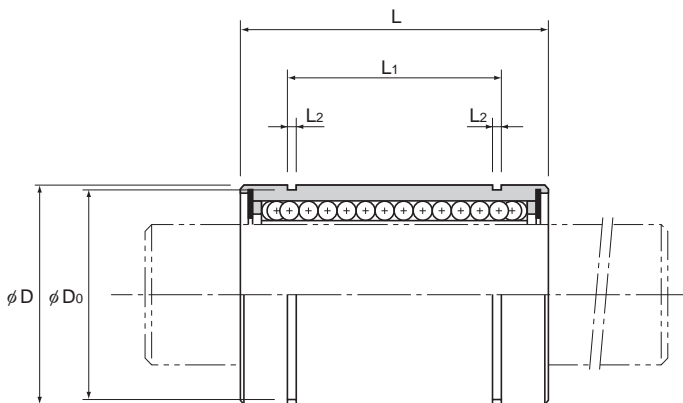


Model LM



Model No.			Ball rows	Main						
Standard type	Clearance-adjustable type	Open type		Inscribed bore diameter		Outer diameter		Length		
				dr	Tolerance Precision High	D	Tolerance Precision/high	L	Tolerance	
LM 3	—	—	4	3	0	0	7	0	10	0
LM 4	—	—	4	4	-0.005	-0.008	8	-0.009	12	
LM 5	—	—	4	5			10		15	
LM 6	LM 6-AJ	—	4	6	0	0	12	0	19	0
LM 8S	LM 8S-AJ	—	4	8			15		17	
LM 8	LM 8-AJ	—	4	8			15		24	
LM 10	LM 10-AJ	—	4	10			19	29		
LM 12	LM 12-AJ	LM 12-OP	4	12			21	30		
LM 13	LM 13-AJ	LM 13-OP	4	13			23	32		
LM 16	LM 16-AJ	LM 16-OP	5	16	28	37	-0.2			
LM 20	LM 20-AJ	LM 20-OP	5	20	32	42				
LM 25	LM 25-AJ	LM 25-OP	6	25	40	59				
LM 30	LM 30-AJ	LM 30-OP	6	30	-0.007	-0.010	45	-0.016	64	
LM 35	LM 35-AJ	LM 35-OP	6	35			52		70	
LM 40	LM 40-AJ	LM 40-OP	6	40	-0.008	-0.012	60	-0.019	80	0
LM 50	LM 50-AJ	LM 50-OP	6	50			80		100	
LM 60	LM 60-AJ	LM 60-OP	6	60	0	0	90	-0.022	110	

Note) Since this model contains a synthetic resin retainer, do not use it at temperature exceeding 80°C.

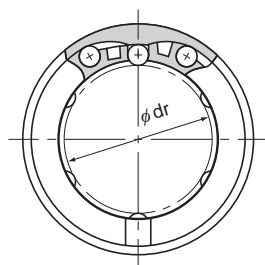
If the ambient temperature exceeds 80°C, use the type equipped with a metal retainer (model LM-GA).

If requiring a type equipped with a seal, indicate it when placing an order.

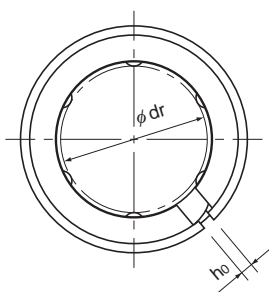
(Example) LM13 UU

_____ Seal attached on both ends of the nut

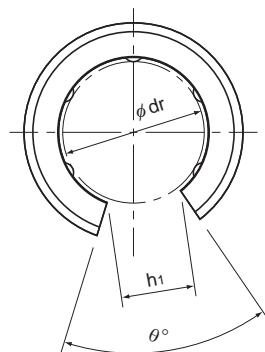
The accuracy of clearance-adjustable types (-AJ) and open types (-OP) in inscribed bore diameter and outer diameter indicates the value before division.



Model LM



Model LM-AJ



Model LM-OP

Unit: mm

	dimensions							Eccentricity (max)		Radial clearance tolerance μm	Basic load rating		
	L_1	Tolerance	L_2	D_0	h_0	h_1	θ°	μm			C N	C_0 N	Mass g
								Precision	High				
—	—	—	—	—	—	—	—	4	8	-2	88.2	108	1.4
—	—	—	—	—	—	—	—	4	8	-3	88.2	127	1.9
10.2	0 -0.2	—	1.1	9.6	—	—	—	4	8	-3	167	206	4
13.5		—	1.1	11.5	1	—	—	8	12	-5	206	265	8
11.5		—	1.1	14.3	1	—	—	8	12	-5	176	225	11
17.5		—	1.1	14.3	1	—	—	8	12	-5	265	402	16
22		—	1.3	18	1	—	—	8	12	-5	373	549	30
23		—	1.3	20	1.5	8	80	8	12	-5	412	598	31.5
23		—	1.3	22	1.5	9	80	8	12	-7	510	775	43
26.5		—	1.6	27	1.5	11	60	8	12	-7	775	1180	69
30.5		—	1.6	30.5	1.5	11	60	10	15	-9	863	1370	87
41		0 -0.3	—	1.85	38	2	12	50	10	15	-9	980	1570
44.5	—		1.85	43	2.5	15	50	10	15	-9	1570	2750	250
49.5	—		2.1	49	2.5	17	50	12	20	-13	1670	3140	390
60.5	—		2.1	57	3	20	50	12	20	-13	2160	4020	585
74	—		2.6	76.5	3	25	50	12	20	-13	3820	7940	1580
85	—		3.15	86.5	3	30	50	17	25	-16	4710	10000	2000

Note) When using the Linear Bushing on a single shaft, use two or more units (instead of one unit) on the same shaft to avoid a moment load, and secure a large distance between the units.

If oil holes are required, specify the model number with the OH symbol added to the end.