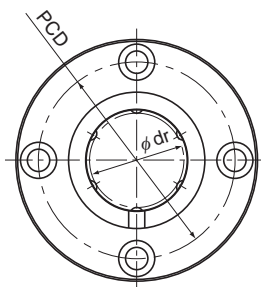


Model LMF



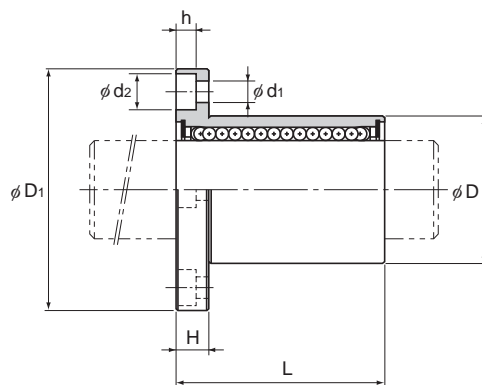
Model LMF

Model No.	Ball rows	Main dimensions							
		Inscribed bore diameter		Outer diameter		Length		Flange diameter	
		dr	Tolerance	D	Tolerance	L	Tolerance	D _f	Tolerance
LMF 6	4	6	0 -0.009	12	0 -0.011	19	0 -0.2	28	0 -0.2
LMF 8S	4	8		15		17		32	
LMF 8	4	8		15	24	32			
LMF 10	4	10		19	29	39			
LMF 12	4	12	21	0 -0.013	30	42			
LMF 13	4	13	23	32	43				
LMF 16	5	16	28	37	48				
LMF 20	5	20	32	42	54				
LMF 25	6	25	0 -0.010	40	0 -0.016	59	62		
LMF 30	6	30	45	64	74				
LMF 35	6	35	0	52	0	70	82		
LMF 40	6	40	-0.012	60	-0.019	80	96		
LMF 50	6	50	0	80	0	100	116		
LMF 60	6	60	0 -0.015	90	0 -0.022	110	134	0 -0.3	

Note) Since this model contains a synthetic resin retainer, do not use it at temperature exceeding 80°C.
If requiring a type equipped with a seal, indicate it when placing an order.

(Example) LMF25 UU

└── Seal attached on both ends of the nut



Unit: mm

	H	PCD	Mounting hole d ₁ × d ₂ × h	Flange perpendicularity	Eccentricity (max)	Radial clearance tolerance	Basic load rating		Mass g
				μm	μm	μm	C N	C ₀ N	
	5	20	3.4 × 6.5 × 3.3	12	12	-5	206	265	26.5
	5	24	3.4 × 6.5 × 3.3	12	12	-5	176	225	34
	5	24	3.4 × 6.5 × 3.3	12	12	-5	265	402	40
	6	29	4.5 × 8 × 4.4	12	12	-5	373	549	78
	6	32	4.5 × 8 × 4.4	12	12	-5	412	598	76
	6	33	4.5 × 8 × 4.4	12	12	-7	510	775	94
	6	38	4.5 × 8 × 4.4	12	12	-7	775	1180	134
	8	43	5.5 × 9.2 × 5.4	15	15	-9	863	1370	180
	8	51	5.5 × 9.2 × 5.4	15	15	-9	980	1570	340
	10	60	6.6 × 11 × 6.5	15	15	-9	1570	2750	460
	10	67	6.6 × 11 × 6.5	20	20	-13	1670	3140	795
	13	78	9 × 14 × 8.6	20	20	-13	2160	4020	1054
	13	98	9 × 14 × 8.6	20	20	-13	3820	7940	2200
	18	112	11 × 17.5 × 10.8	25	25	-13	4710	10000	2960