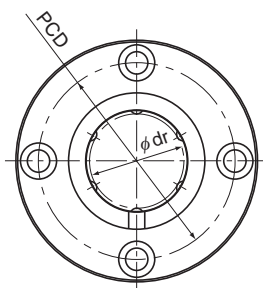


Model LMF-M (Stainless Steel Type)



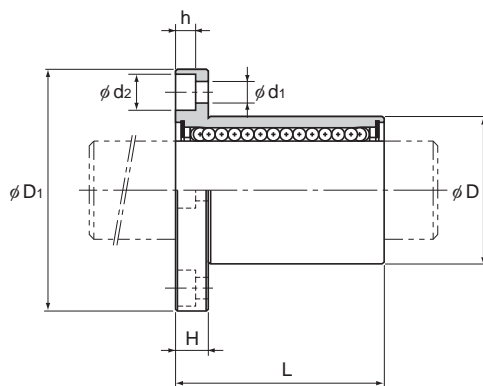
Model LMF-M

Model No.	Ball rows	Main dimensions							
		Inscribed bore diameter		Outer diameter		Length		Flange diameter	
		dr	Tolerance	D	Tolerance	L	Tolerance	D _i	Tolerance
LMF 6M	4	6	0 -0.009	12	0 -0.011	19	0 -0.2	28	0 -0.2
LMF 8SM	4	8		15		17		32	
LMF 8M	4	8		15	24	32			
LMF 10M	4	10		19	29	39			
LMF 12M	4	12	21	0 -0.013	30	42			
LMF 13M	4	13	23	32	43				
LMF 16M	5	16	28	37	48				
LMF 20M	5	20	32	0 -0.016	42	54			
LMF 25M	6	25	40	59	0	62			
LMF 30M	6	30	45	64	-0.3	74			

Note) Since this model contains a synthetic resin retainer, do not use it at temperature exceeding 80°C.
If requiring a type equipped with a seal, indicate it when placing an order.

(Example) LMF20M UU

└── Seal attached on both ends of the nut



Unit: mm

	H	PCD	Mounting hole d ₁ × d ₂ × h	Flange perpendicularity	Eccentricity (max)	Radial clearance tolerance	Basic load rating		Mass g
				μm	μm	μm	C N	C ₀ N	
	5	20	3.4 × 6.5 × 3.3	12	12	-5	206	265	26.5
	5	24	3.4 × 6.5 × 3.3	12	12	-5	176	225	34
	5	24	3.4 × 6.5 × 3.3	12	12	-5	265	402	40
	6	29	4.5 × 8 × 4.4	12	12	-5	373	549	78
	6	32	4.5 × 8 × 4.4	12	12	-5	412	598	76
	6	33	4.5 × 8 × 4.4	12	12	-7	510	775	94
	6	38	4.5 × 8 × 4.4	12	12	-7	775	1180	134
	8	43	5.5 × 9.2 × 5.4	15	15	-9	863	1370	180
	8	51	5.5 × 9.2 × 5.4	15	15	-9	980	1570	340
	10	60	6.6 × 11 × 6.5	15	15	-9	1570	2750	460

Note) Since the nut and the balls use stainless steel, these models are highly resistant to corrosion and environment.