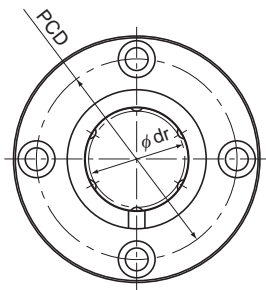


Model LMF-ML (Stainless Steel Type)



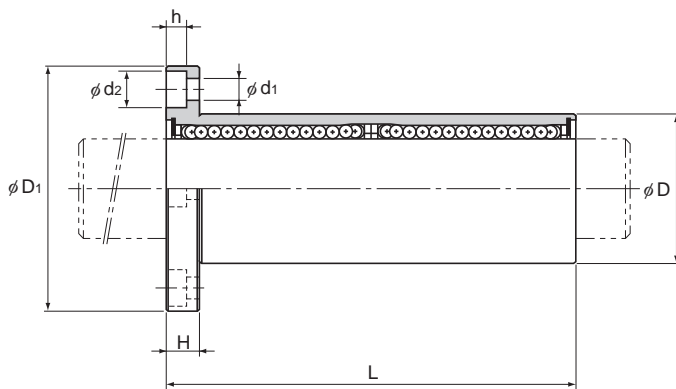
Model LMF-ML

Model No. Standard type	Ball rows	Main dimensions							
		Inscribed bore diameter		Outer diameter		Length		Flange diameter	
		dr	Tolerance	D	Tolerance	L	Tolerance	D ₁	Tolerance
LMF 6ML	4	6	0 -0.010	12	0	35	0 -0.3	28	0 -0.2
LMF 8ML	4	8		15	-0.013	45		32	
LMF 10ML	4	10		19	0 -0.016	55		39	
LMF 12ML	4	12		21		57		42	
LMF 13ML	4	13	23	0 -0.019	61	43			
LMF 16ML	5	16	28		70	48			
LMF 20ML	5	20	32	0 -0.012	80	54			
LMF 25ML	6	25	40		112	0	62		
LMF 30ML	6	30	45		123	-0.4	74		

Note) Since this model contains a synthetic resin retainer, do not use it at temperature exceeding 80°C.
If requiring a type equipped with a seal, indicate it when placing an order.

(Example) LMF13ML UU

└── Seal attached on both ends of the nut



Unit: mm

	H	PCD	Mounting hole d ₁ × d ₂ × h	Flange perpendicularity	Eccentricity (max)	Radial clearance tolerance	Basic load rating		Mass g
				μm	μm	μm	C N	C ₀ N	
	5	20	3.4 × 6.5 × 3.3	15	15	-5	324	529	32
	5	24	3.4 × 6.5 × 3.3	15	15	-5	431	784	53
	6	29	4.5 × 8 × 4.4	15	15	-5	588	1100	105
	6	32	4.5 × 8 × 4.4	15	15	-5	657	1200	100
	6	33	4.5 × 8 × 4.4	15	15	-7	814	1570	130
	6	38	4.5 × 8 × 4.4	15	15	-7	1230	2350	187
	8	43	5.5 × 9.2 × 5.4	20	20	-9	1400	2750	260
	8	51	5.5 × 9.2 × 5.4	20	20	-9	1560	3140	515
	10	60	6.6 × 11 × 6.5	20	20	-9	2490	5490	655

Note) Since the nut and the balls use stainless steel, these models are highly resistant to corrosion and environment.