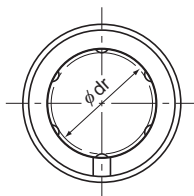


Model LM-L



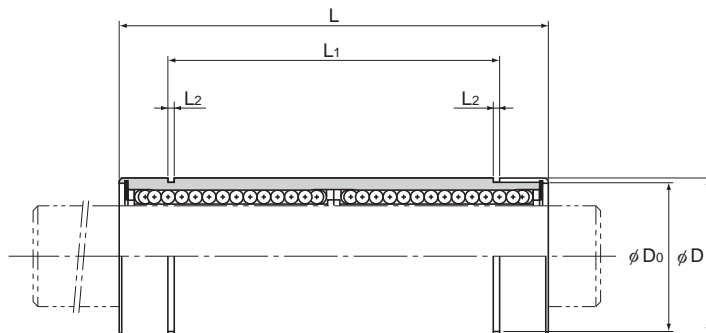
Model LM-L

Model No.	Ball rows	Main						
		Inscribed bore diameter		Outer diameter		Length		
		dr	Tolerance	D	Tolerance	L	Tolerance	
LM 3L	4	3	0 -0.010	7	0 -0.013	19	0 -0.3	
LM 4L	4	4		8		0 -0.016		23
LM 5L	4	5		10				29
LM 6L	4	6		12				35
LM 8L	4	8		15				45
LM 10L	4	10		19	0 -0.016	55		
LM 12L	4	12		21		57		
LM 13L	4	13		23		61		
LM 16L	5	16		28		70		
LM 20L	5	20		0 -0.012	32	0 -0.019		80
LM 25L	6	25	40		112			
LM 30L	6	30	45		123			
LM 35L	6	35	0 -0.015	52	0 -0.022	135		
LM 40L	6	40		60		154		
LM 50L	6	50		80		192		
LM 60L	6	60		90		211		
			0 -0.020		0 -0.025			

Note) Since this model contains a synthetic resin retainer, do not use it at temperature exceeding 80°C.
If requiring a type equipped with a seal, indicate it when placing an order.

(Example) LM13L UU

└── Seal attached on both ends of the nut



Unit: mm

dimensions					Eccentricity (max) μm	Radial clearance tolerance μm	Basic load rating		Mass g
L ₁	Tolerance	L ₂	D ₀	C N			C ₀ N		
—	—	—	—	10	-2	139	216	3	
—		—	—	10	-3	139	254	4	
20	0 -0.3	1.1	9.6	10	-3	263	412	8	
27		1.1	11.5	15	-5	324	529	16	
35		1.1	14.3	15	-5	431	784	31	
44		1.3	18	15	-5	588	1100	62	
46		1.3	20	15	-5	657	1200	80	
46		1.3	22	15	-7	814	1570	90	
53		1.6	27	15	-7	1230	2350	145	
61		1.6	30.5	20	-9	1400	2750	180	
82		0 -0.4	1.85	38	20	-9	1560	3140	440
89			1.85	43	20	-9	2490	5490	580
99	2.1		49	25	-13	2650	6270	795	
121	2.1		57	25	-13	3430	8040	1170	
148	2.6		76.5	25	-13	6080	15900	3100	
170	3.15		86.5	25	-16	7650	20000	3500	

Note) A stainless steel type is also available. Contact THK for details.

If oil holes are required, specify the model number with the OH symbol added to the end.