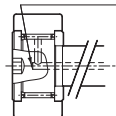


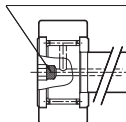
Model CFH-A (Eccentric Cam Follower with Hexagon Socket (Cylindrical Outer Ring)), Model CFH-M-A (Made of Stainless Steel)
 Model CFH-R-A (Eccentric Cam Follower with Hexagon Socket (Spherical Outer Ring)), Model CFH-MR-A (Made of Stainless Steel)

Oil hole is a blind hole

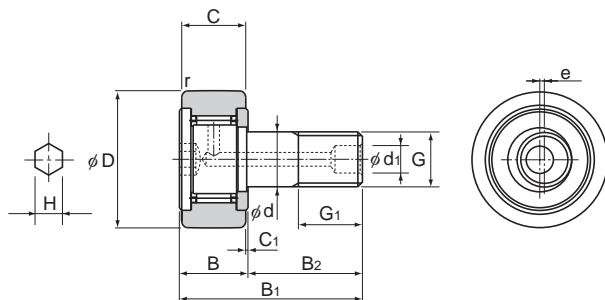


CFH12A to 20-1A
CFH12AM to 30-2AM

Plug pressed into hexagon socket to render oil hole as a blind hole



CFH24A to CFH30-2A



Stud diameter	Model No.	Main dimensions												
		Outer diameter	Outer ring width	Threaded			Overall length				Runout		Shoulder height f (Min.)	
d		D	C	G	G ₁	B	B ₁	B ₂	C ₁	d ₁	e	H*	r _{min}	f
5	CFH 5-A	13	9	M5×0.8	7.5	10	23	13	0.5	—*	0.2	3 (2.5)	0.3	9.7
6	CFH 6-A	16	11	M6×1	8	12	28	16	0.6	—*	0.25	3	0.3	11
8	CFH 8-A	19	11	M8×1.25	10	12	32	20	0.6	—*	0.25	4	0.3	13
10	CFH 10-A	22	12	M10×1.25	12	13	36	23	0.6	—*	0.3	5	0.3	15
10	CFH 10-1-A	26	12	M10×1.25	12	13	36	23	0.6	—*	0.3	5	0.3	15
12	CFH 12-A	30	14	M12×1.5	13	15	40	25	0.6	6	0.4	6	0.6	20
12	CFH 12-1-A	32	14	M12×1.5	13	15	40	25	0.6	6	0.4	6	0.6	20
16	CFH 16-A	35	18	M16×1.5	17	19.5	52	32.5	0.8	6	0.5	6	0.6	24
18	CFH 18-A	40	20	M18×1.5	19	21.5	58	36.5	0.8	6	0.6	6	1	26
20	CFH 20-A	52	24	M20×1.5	21	25.5	66	40.5	0.8	8	0.7	8	1	36
20	CFH 20-1-A	47	24	M20×1.5	21	25.5	66	40.5	0.8	8	0.7	8	1	36
24	CFH 24-A	62	29	M24×1.5	25	30.5	80	49.5	0.8	8	0.8	8	1	40
24	CFH 24-1-A	72	29	M24×1.5	25	30.5	80	49.5	0.8	8	0.8	8	1	40
30	CFH 30-A	80	35	M30×1.5	32	37	100	63	1	8	1	8	1	46
30	CFH 30-1-A	85	35	M30×1.5	32	37	100	63	1	8	1	8	1	46
30	CFH 30-2-A	90	35	M30×1.5	32	37	100	63	1	8	1	8	1	46

Note) THK also manufactures types that have a driver groove and a greasing hole on the head. (Model numbers of types with a driver groove do not include symbol "A" in the end.)

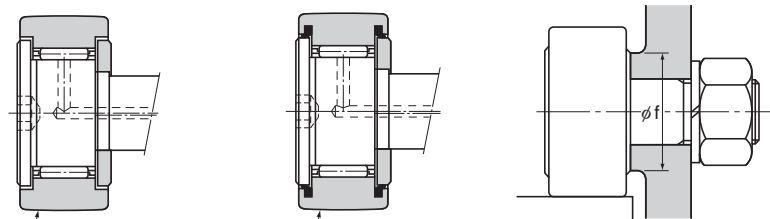
The seal must be used at temperature of 80°C or below.

Those models marked with "*" do not have a greasing hole and cannot be replenished with grease.

Model number coding

CFH24-1	V	M	UU	R	-A
Model number					Stud with a hexagon socket
No symbol: With cage					No Symbol: Cylindrical outer ring
V	: Full-roller Type			R	: Spherical outer ring
		No symbol: Carbon steel	no symbol: without seal		
		M	: Stainless steel	UU	: With seal

Note) Full-roller Type is applicable for Stud Diameter 6 to 30.



R500 (CFH18 or lower)
R1000 (CFH20 or higher)

Model CFH-R

R500 (CFH18 or lower)
R1000 (CFH20 or higher)

Model CFH...UUR

Unit: mm

	Basic load rating				Maximum permissible load F_0 kN	Track load capacity		Rotational speed limit *		Mass	
	With cage		Full rollers			Cylindrical outer ring kN	Spherical outer ring kN	With cage min^{-1}	Full rollers min^{-1}	With cage g	Full rollers g
	C kN	C_0 kN	C kN	C_0 kN							
	3.14	2.77	—	—	1.42	2.25	0.53	29000	—	10.5	—
	3.59	3.58	6.94	8.5	2.11	3.43	1.08	25000	11000	18.5	19
	4.17	4.65	8.13	11.2	4.73	4.02	1.37	20000	8700	28.5	29
	5.33	6.78	9.42	14.3	5.81	4.7	1.67	17000	7200	45	46
	5.33	6.78	9.42	14.3	5.81	5.49	2.06	17000	7200	60	61
	7.87	9.79	13.4	19.8	9.37	7.06	2.45	14000	5800	95	97
	7.87	9.79	13.4	19.8	9.37	7.45	2.74	14000	5800	105	107
	12	18.3	20.6	37.6	17.3	11.2	3.14	10000	4500	170	173
	14.7	25.2	25.2	51.3	26.1	14.4	3.72	8500	3800	250	255
	20.7	34.8	33.2	64.8	32.1	23.2	8.23	7000	3400	460	465
	20.7	34.8	33.2	64.8	32.1	21	7.15	7000	3400	385	390
	30.6	53.2	46.7	92.9	49.5	34.2	10.5	6500	2900	815	820
	30.6	53.2	46.7	92.9	49.5	39.8	12.9	6500	2900	1140	1140
	45.4	87.6	67.6	145	73.7	52.6	14.9	5000	2300	1870	1870
	45.4	87.6	67.6	145	73.7	56	16.1	5000	2300	2030	2030
	45.4	87.6	67.6	145	73.7	59.3	17.3	5000	2300	2220	2220

Note1) ○: Model CFH5M-A made of stainless steel is available on a made-to-order basis. If planning to use this model, contact THK.

Note2) ★ indicates that the dimensions in the parentheses in this row apply to stainless steel types.

Note3) The rotation speed limit value in the table (*) applies to models that have no seal and use grease lubrication. With those models using oil lubrication, up to 130% of this value is permitted. With those attached with seals, up to 70% of this value is permitted.

• Eccentric type (model CFH) variations

Type in which the stud head side and screw side are tapped for pipe fitting (model CFHT)

Type with a hexagon socket in the stud head side (model CFHT-A) (suitable for stud diameters of 12 mm or more)

Type with a hexagon socket in the stud screw side (model CFHT-B) (suitable for stud diameters of 12 mm or more)

Contact THK for information on other variations.

Note4) CF24 or larger cam followers with hexagon sockets (symbol - A, excluding SUS models) are constructed with a plug fitted into the through hole that links the hexagon socket to the greasing hole (see dimensional drawing $\phi d, \phi d_z$: **A19-18**) to prevent grease leakages from the hexagon socket.

During greasing, take care to ensure that the plug is not forced out of the hexagon socket by excessive pressure.