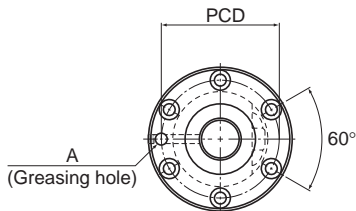


Preload Type of Precision Ball Screw

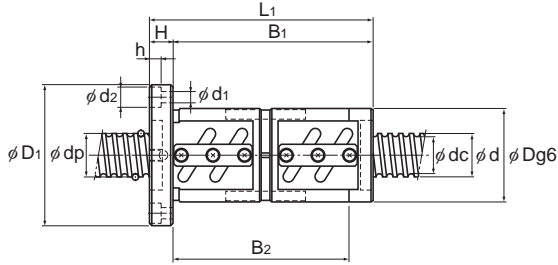
Screw shaft outer diameter	55
Lead	10 to 20



BNFN

Screw shaft outer diameter d	Lead Ph	Model No.	Ball center-to-center diameter dp	Thread minor diameter dc	No. of loaded circuits Rows × turns	Basic load rating		Rigidity K N/μm
						Ca kN	C _{0a} kN	
55	10	BNFN 5510-2.5	56.75	49.5	1×2.5	33.4	97	970
		BNFN 5510-5	56.75	49.5	2×2.5	60.7	194	1890
		BNFN 5510-7.5	56.75	49.5	3×2.5	85.9	291.1	2770
	12	BNFN 5512-2.5	57	49.2	1×2.5	39.3	108.8	990
		BNFN 5512-3	57	49.2	2×1.5	46	131.3	1180
		BNFN 5512-3.5	57	49.2	1×3.5	52.4	152.9	1360
		BNFN 5512-5	57	49.2	2×2.5	71.3	218.5	1920
	16	BNFN 5512-7.5	57	49.2	3×2.5	100.9	327.3	2830
		BNFN 5516-2.5	57.7	47.9	1×2.5	76.1	201.9	1310
	20	BNFN 5516-5	57.7	47.9	2×2.5	138.2	402.8	2550
		BNFN 5520-2.5	57.7	47.9	1×2.5	76	201.9	1320
		BNFN 5520-5	57.7	47.9	2×2.5	138.2	403.8	2550

Note) The model numbers in dimmed type indicate semi-standard types.
If desiring them, contact THK.



BNFN

Unit: mm

	Nut dimensions								Screw shaft inertial moment/mm kg·cm ² /mm	Nut mass kg	Shaft mass kg/m
	Outer diameter D	Flange diameter D ₁	Overall length L ₁	H	B ₁	PCD	d ₁ ×d ₂ ×h	Greasing hole A			
	102	144	141	18	123	122	11×17.5×11	PT 1/8	7.05×10 ⁻²	6.54	16.43
	102	144	201	18	183	122	11×17.5×11	PT 1/8	7.05×10 ⁻²	8.88	16.43
	102	144	261	18	243	122	11×17.5×11	PT 1/8	7.05×10 ⁻²	11.23	16.43
	105	147	165	18	147	125	11×17.5×11	PT 1/8	7.05×10 ⁻²	8.07	16.29
	105	147	191	18	173	125	11×17.5×11	PT 1/8	7.05×10 ⁻²	9.17	16.29
	105	147	189	18	171	125	11×17.5×11	PT 1/8	7.05×10 ⁻²	9.09	16.29
	105	147	237	18	219	125	11×17.5×11	PT 1/8	7.05×10 ⁻²	11.13	16.29
	105	147	309	18	291	125	11×17.5×11	PT 1/8	7.05×10 ⁻²	14.19	16.29
	110	158	196	25	171	133	14×20×13	PT 1/8	7.05×10 ⁻²	11.28	15.46
	110	158	292	25	267	133	14×20×13	PT 1/8	7.05×10 ⁻²	15.94	15.46
	112	158	227	28	199	134	14×20×13	PT 1/8	7.05×10 ⁻²	13.49	16.1
	112	158	347	28	319	134	14×20×13	PT 1/8	7.05×10 ⁻²	19.61	16.1

For model number coding, see **A15-248**.