



Price index



Extremely low noise
Test results upon request



IPA certificate: Class 1, according to standard DIN EN ISO 14644-1 for the E6 system (Series E6.29.060.150.0.CR, $v = 0.5 \text{ m/s}$, $a = 1.0 \text{ m/s}^2$)

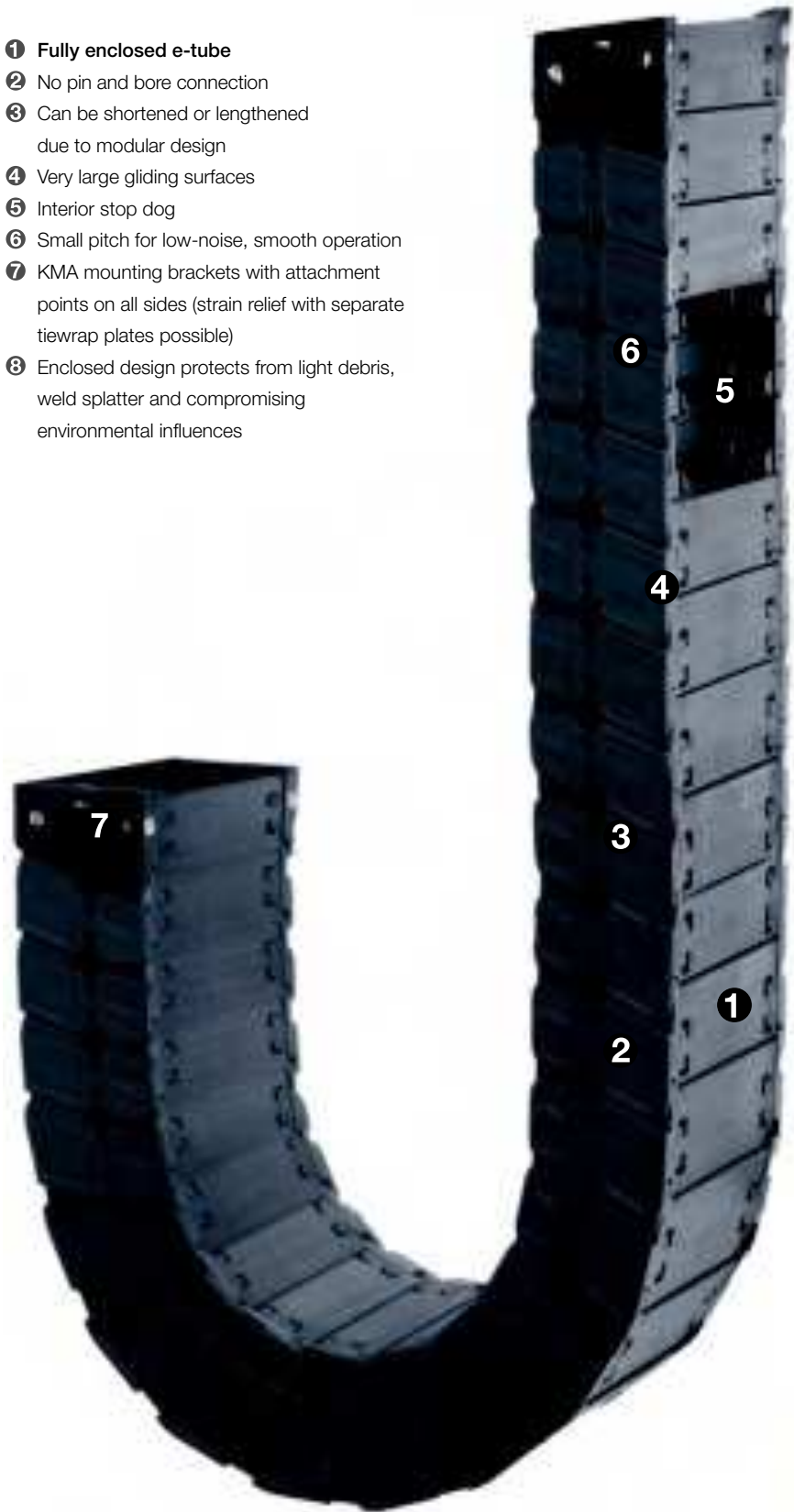


LEVEL 1 absorption confirmed by IPA-Fraunhofer-Institut according to SEMI E78-0998 for the E6 standard material

- 1 Fully enclosed e-tube
- 2 No pin and bore connection
- 3 Can be shortened or lengthened due to modular design
- 4 Very large gliding surfaces
- 5 Interior stop dog
- 6 Small pitch for low-noise, smooth operation
- 7 KMA mounting brackets with attachment points on all sides (strain relief with separate tie-wrap plates possible)
- 8 Enclosed design protects from light debris, weld splatter and compromising environmental influences



Remove and replace lids



When to use the Series R6.29:

- If a low-noise version is required
- At very high speeds and/or accelerations
- Protection against dirt and chips
- For small bending radii
- If less vibration is required
- Minimal abrasion
(e.g. cleanroom applications)



When not to use it:

- Limited in side-mounted applications
▶ Series 2450/2480 E2/000, page 5.160
- No use with RBR (reverse bending radius)
▶ Series 2450/2480 E2/000, page 5.160
- No use with high additional loads
▶ Series 2450/2480 E2/000, page 5.160



Order example complete e-chain®

Please indicate chain-lengths or number of links **Example: 2 m or 92 links**

2 m **R6.29.080.100.0**



e-tube

with 2 separators **R6.29.11** assembled every 2nd link



Interior separation

1 set **R6.290.080.12**



Mounting bracket

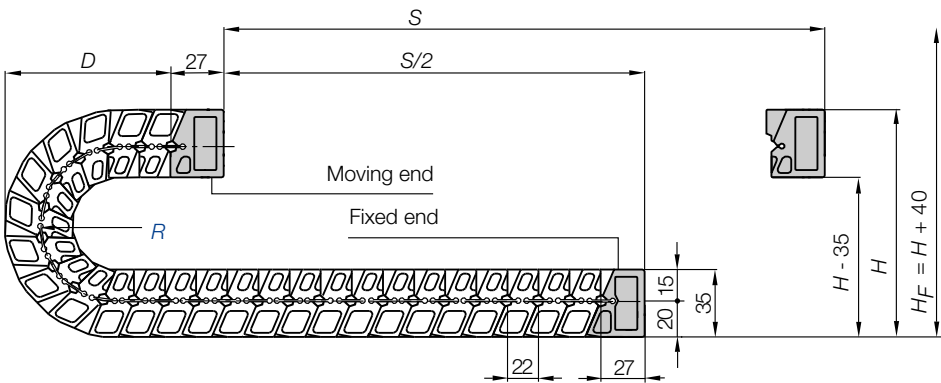
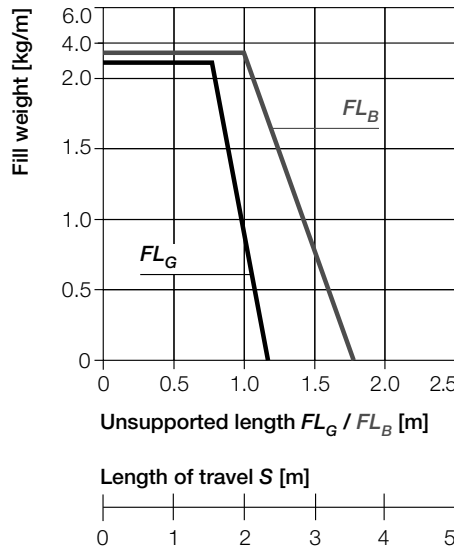
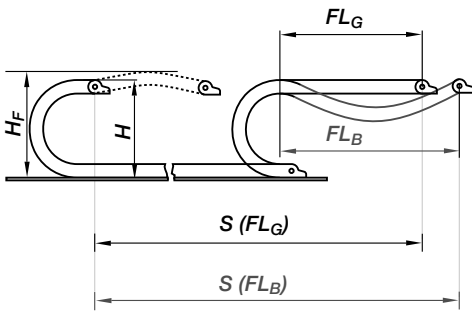


Unsupported length

FL_G = with straight upper run

FL_B = with permitted sag

Further information ► **Design, page 1.12**



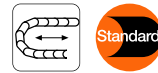
Pitch = 22 mm/link Links/m = 46 (1012 mm) Chain length = $S/2 + K$

R	055	075	100	150
H	180	220	270	370
D	97	117	142	192
K	220	280	360	520

- S = Length of travel
- R = Bending radius
- H = Nominal clearance height
- H_F = Required clearance height
- D = Overlength e-chain[®] radius in final position
- $K = \pi \cdot R + \text{"safety"}$

Other installation methods

- Vertical, hanging ≤ 30 m
- Vertical, standing ≤ 2 m
- Side mounted, unsupported = possible to a limited extent
- Unsupported length of upper run = upon request



Short travels - unsupported

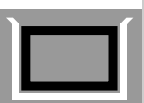
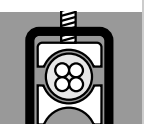
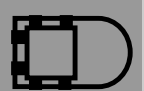
Unsupported e-chains[®] feature positive camber over short travels. This must be accounted for when specifying the clearance height H_F . Please consult igus[®] if space is particularly restricted.

The required clearance height:
 $H_F = H + 40$ mm
 (with 2,0 kg/m fill weight)

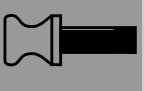


System E6
Inner height: 28 mm

Phone +49- (0) 22 03-96 49-800
Fax +49- (0) 22 03-96 49-222



Trough E6.29
 ► page 8.45



► page 8.39

Speed / acceleration FL_G	max. 20 [m/s] / max. 200 [m/s ²]
Speed / acceleration FL_B	max. 3 [m/s] / max. 6 [m/s ²]
Gliding speed / acceleration (maximum)	upon request
permitted temperature °C	-40° up to +70° C
Flammability class	VDE 0304 IIC UL94 HB

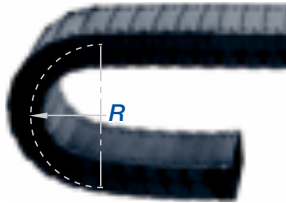
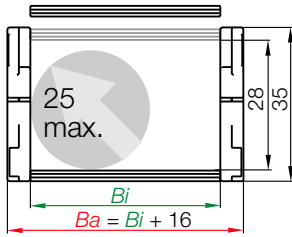
Technical Data



Details of material properties

► page 1.38

For support of the lower run - **Support Tray tool kit** available ► page 9.70



Series R6.29 - e-tube, lids can be removed along inner and outer radius

Part No.	B_i [mm]	B_a [mm]	R [mm]	Bending radii				Weight [kg/m]
R6.29.030.□.0	30	46	055	075	100	150	≈ 0,80	
R6.29.040.□.0	40	56	055	075	100	150	≈ 0,85	
R6.29.050.□.0	50	66	055	075	100	150	≈ 0,89	
R6.29.060.□.0	60	76	055	075	100	150	≈ 0,94	
R6.29.070.□.0	70	86	055	075	100	150	≈ 0,97	
R6.29.080.□.0	80	96	055	075	100	150	≈ 1,03	
R6.29.090.□.0	90	106	055	075	100	150	≈ 1,08	
R6.29.100.□.0	100	116	055	075	100	150	≈ 1,13	
R6.29.110.□.0	110	126	055	075	100	150	≈ 1,18	
R6.29.120.□.0	120	136	055	075	100	150	≈ 1,22	

The widths B_i 070 / 090 are available upon request.

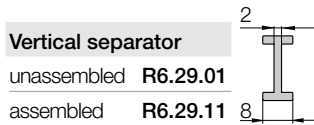
Time of delivery approx. 6-8 weeks after order.

Supplement Part No. with required radius. Example: R6.29.060.100.0

0 = standard color, other colors ▶ page 1.39 · Pitch = 22 mm/link - Links/m = 46

Part No. structure

R6.29.060.100.0



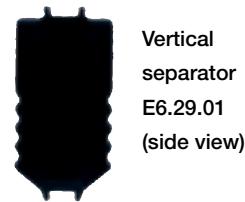
Vertical separator
unassembled R6.29.01
assembled R6.29.11

E6 | e-tube | **Series R6.29** | Accessories | Interior Separation

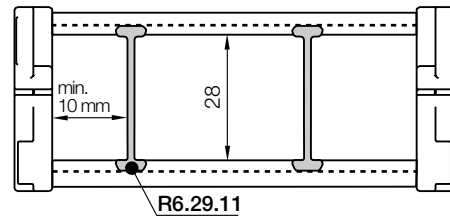
Option 1: Vertical separators

Vertical separators are used if a vertical subdivision of the e-chain® interior is required - By standard vertical separators are assembled every other e-chain® link!

- The notches on this separator marks the sticking side for a stuck mounting on the lid
- Standard subdivision with vertical separator E6.29.11



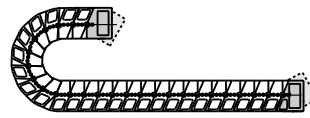
Vertical separator E6.29.01 (side view)





* KMA = Polymer Metal Mounting Bracket

Moving end
R6.290...2

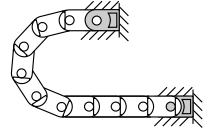


Option KMA* - pivoting

- Bolted connection outside of chain cross-section
- Recommended for unsupported applications (for gliding applications please contact igus®)
- Confined installation conditions
- Universal mountable with attachment capability on all sides

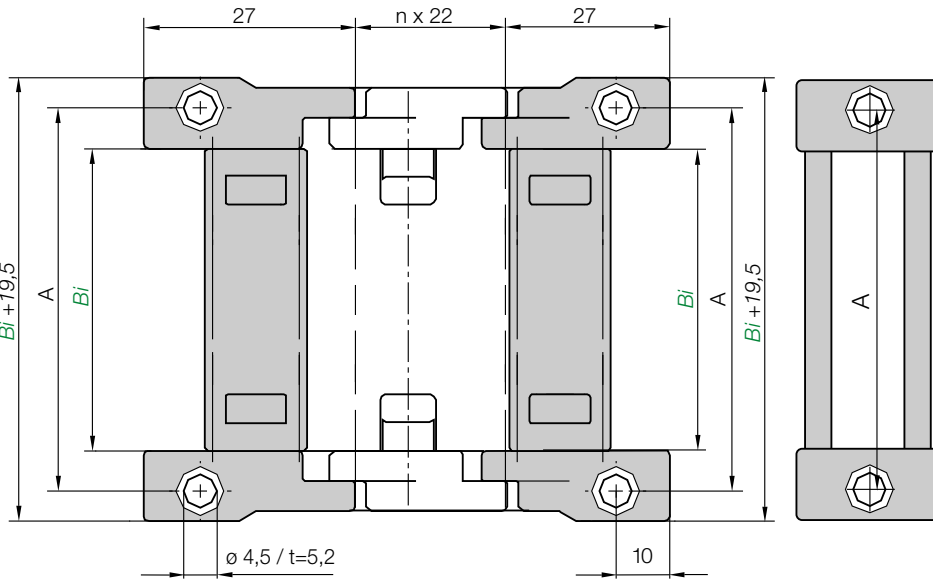
R6.290...1
Fixed end

The attachment variants arising automatically by the choice of the KMA mounting bracket



R6.290...2
Fixed end

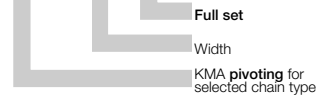
R6.290...1
Moving end



Dimensions and order configurations

Part No. structure

R6.290.030.12



Full set, for both ends:

R6.290.030.12

Single-part order:

R6.290.030.1

Fixed end mounting bracket

R6.290.030.2

Moving end mounting bracket

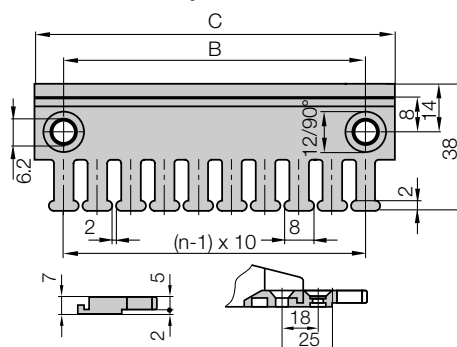
For e-chain®	Part No. full set	Dim. A [mm]
R6.29.030	R6.290.030.12	40
R6.29.050	R6.290.050.12	60
R6.29.060	R6.290.060.12	70

For e-chain®	Part No. full set	Dim. A [mm]
R6.29.080	R6.290.080.12	90
R6.29.110	R6.290.110.12	120
R6.29.120	R6.290.120.12	130

E6 | e-chain® | **Series R6.29** | **Accessories** | Strain Relief

Tiewrap plate	n Number of teeth	Dim. C [mm]	Dim. B [mm]
2020.ZB	3	30	15
2030.ZB	4	40	20
2040.ZB	5	50	30
2050.ZB	6	60	40
2070.ZB	8	80	60
2090.ZB = (2030.ZB + 2040.ZB)	9	90	-
2100.ZB	10	100	80
2125.ZB = (2050.ZB + 2050.ZB)	12	120	-

igus® chainfix tiewrap plate as individual part

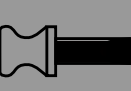


Other strain relief elements - optional ▶ chapter 10



Aluminum "SuperTrough" for Series R6.29 ▶ page 8.45

Phone +49- (0) 22 03-96 49-800
Fax +49- (0) 22 03-96 49-222



▶ page 8.39